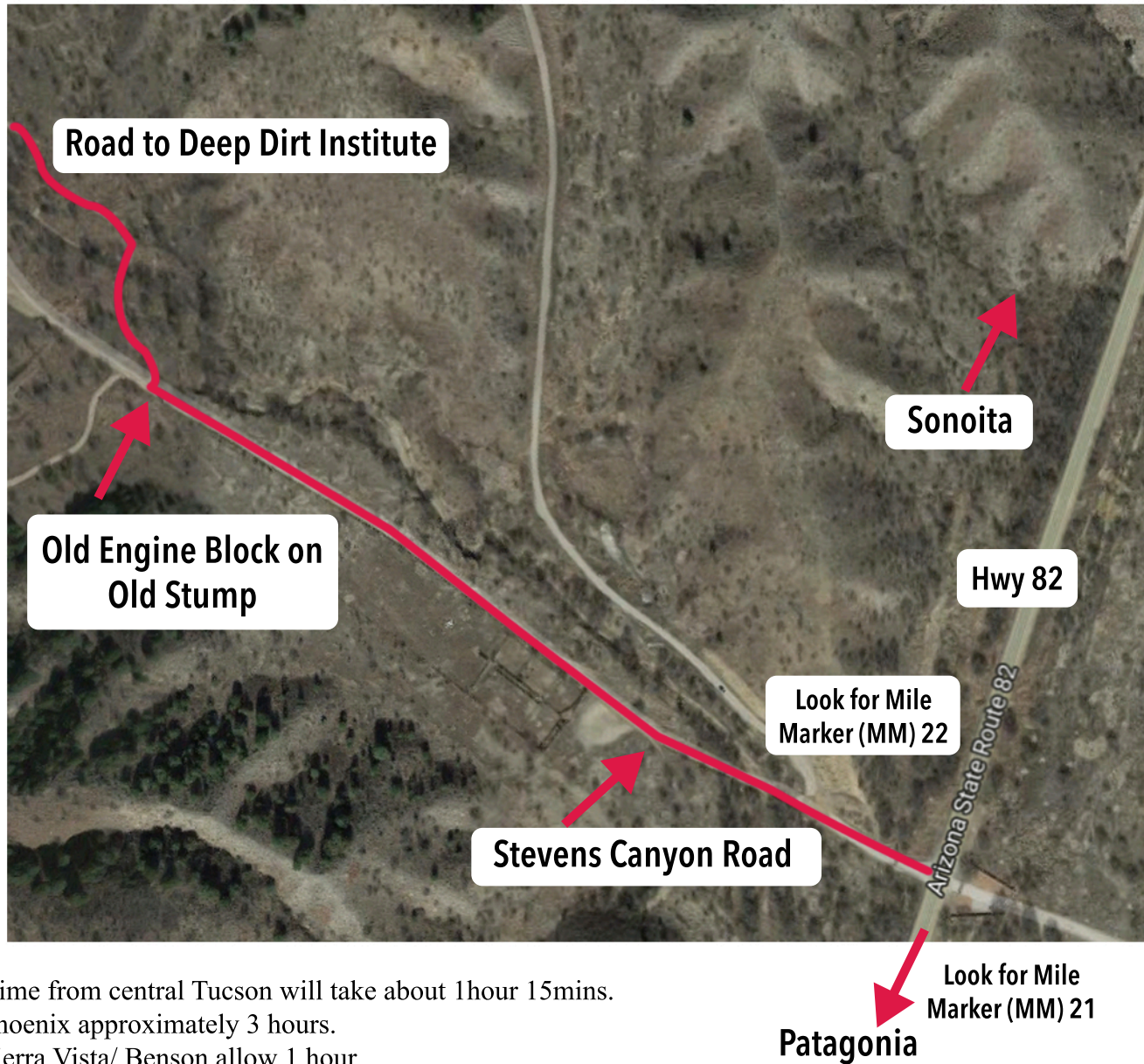


# Instructions to Deep Dirt Institute



Travel time from central Tucson will take about 1 hour 15 mins.  
From Phoenix approximately 3 hours.  
From Sierra Vista/ Benson allow 1 hour

- 1.) From **Tucson/ Phoenix** begin on **Interstate 10 E**
- 2.) Exit **281**, scenic **Hwy 83** for Sonoita / Patagonia
- 3.) Follow to Sonoita (about 30 mins.)
- 4.) At Sonoita crossroads turn **R** onto **Hwy 82 S** to Patagonia
- 5.) Just past **MM 22** (about 15 mins.) you will turn **R onto Stevens Canyon Road** - across from an imposing entrance to Rail X Ranch Estates. You are now 3 minutes away!

- 1.) From **Patagonia** begin on **Hwy 82 N** towards Sonoita
- 2.) Past **MM 21** you will turn **L onto Stevens Canyon Road** - across from an imposing entrance to Rail X Ranch Estates. You are now 3 minutes away!

## On Stevens Canyon Road

- You will be faced with a choice. Do not take the R fork. Go straight through the wash past corrals on the left.
- Immediately past corrals **turn R** onto our dirt driveway (old engine block on a wood stump on the corner)
- Follow through the simple bar gate and small wash
- Park as directed or look for parking signs: P1 P2 P3 P4 P5

**Note:** Park as if you are in a shopping center and leave room for others.

